



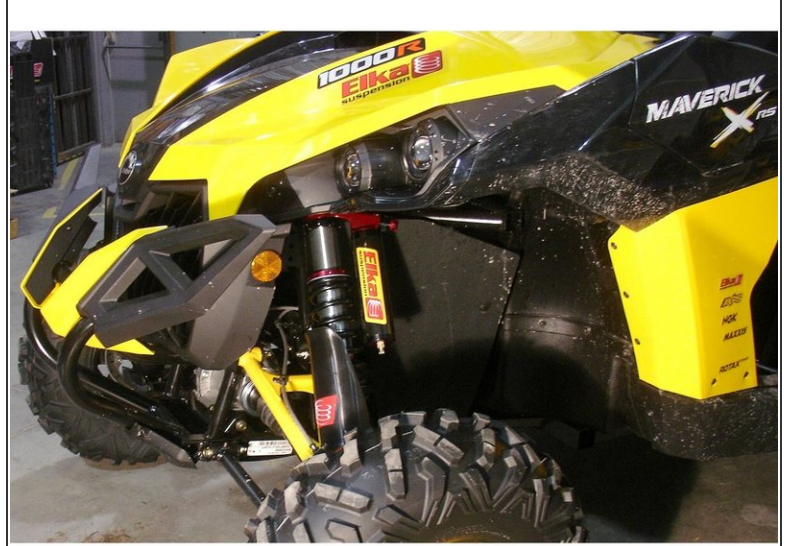
# Can-Am MAVERICK (All except X3)

FLS-0701\_revA

Written By: Steve Boulay



## Step 1 — FRONT SHOCKS



- ❗ **IMPORTANT:** The piggyback head and reservoir must be oriented towards the rear of the vehicle and slightly pointing outwards as shown below.
- You might need to rotate the lower eyelet clockwise to ensure the rebound adjuster is pointing towards the rear of the vehicle to be accessible and protected from roost and debris coming from other vehicles in front.
- ❗ **Front left side shown on the pictures.**



## Step 2 — REAR SHOCKS



- ❗ **IMPORTANT:** The piggyback head and reservoir must be oriented towards the rear of the vehicle
- You might need to rotate the lower eyelet clockwise to ensure the rebound adjuster is pointing towards the rear of the vehicle to be accessible and protected from roost and debris coming from the front wheels.
- ❗ **Rear left side shown on the pictures.**
- ⚠ **IMPORTANT NOTE:** The piggyback heads on the front shocks have opposite angles for the reservoir and can only fit one way. Make sure the reservoirs are oriented as shown above.