



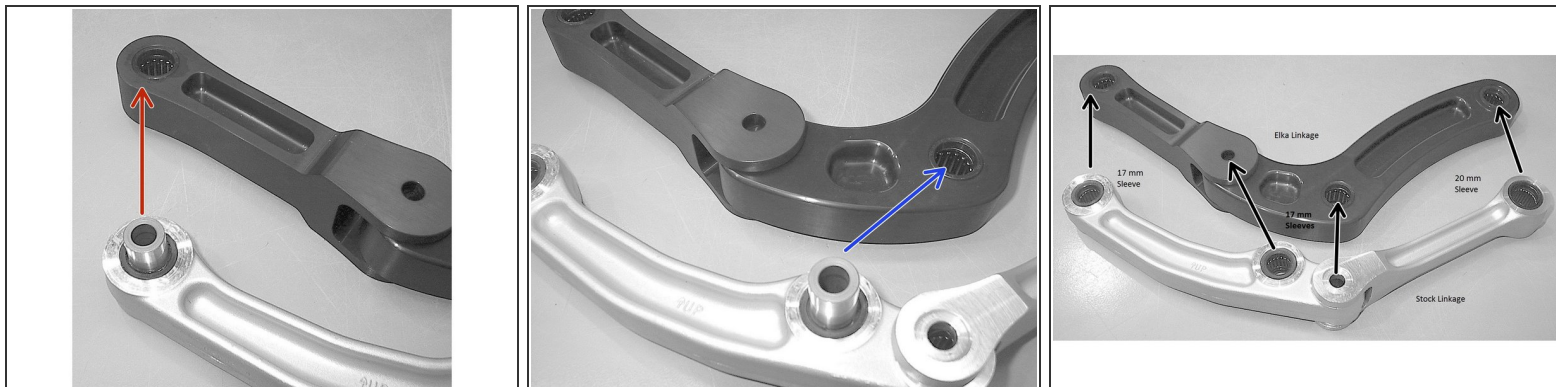
HONDA TRX450R Linkage (2004-2005)

ASS-LK-0168

Written By: Steve Boulay

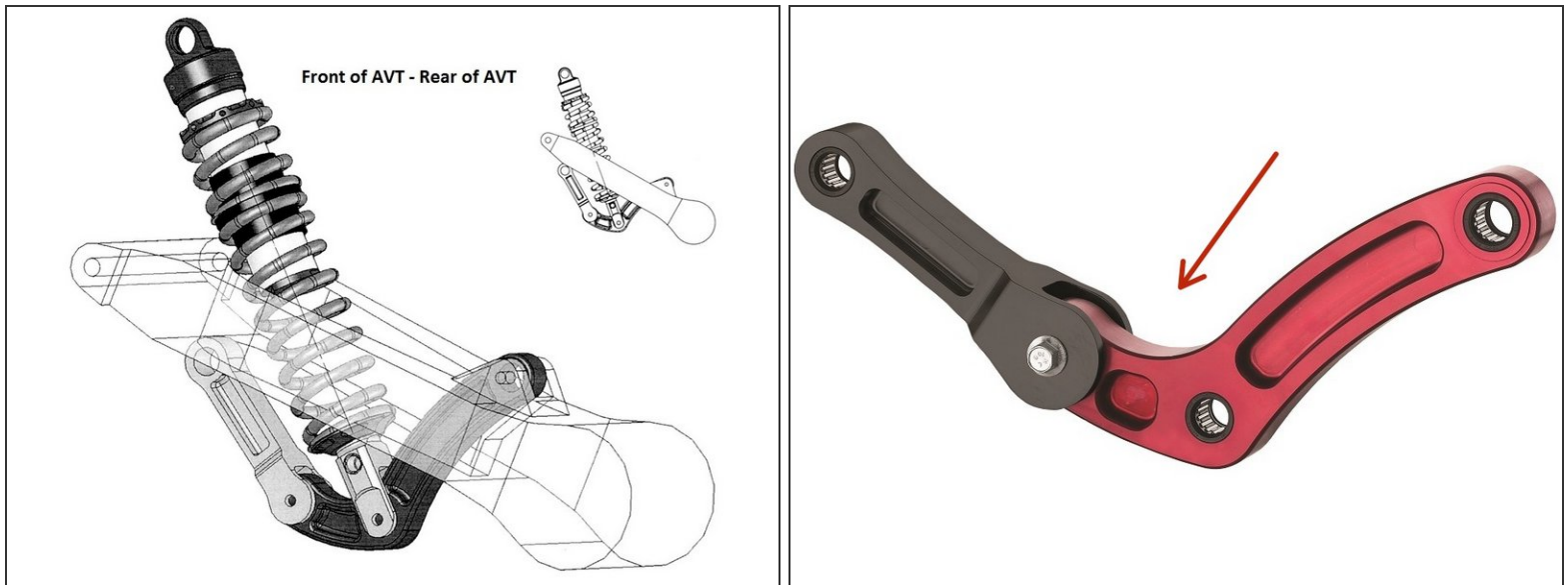


Step 1 — Removing the stock linkage



- Remove the stock linkage from the ATV (refer to the Honda Service Manual for detailed instructions). Remove the sleeves from your stock linkage. Install those sleeves into your new Elka linkage. Be sure to transfer the sleeves to the corresponding bearing on the Elka linkage.
- ⓘ If the sleeves are worn, they will need to be replaced prior to installation in the Elka linkage.
- ⚠ **VERY IMPORTANT:** Apply grease to the bearings before inserting the sleeves into your Elka linkage. Keep the bearings properly greased to prevent premature wear of the linkage and bearings.

Step 2 — Installing the Elka linkage



- Install the Elka Linkage. Be sure to tighten correctly according to the torque table found in your Honda Service Manual. Install your new Elka shock absorber. You might have to modify, shim or remove your skidplate to allow proper clearance.
 - Follow the same maintenance procedures as for your stock linkage shown in your Honda Service and Owner's manuals. Check once a season for bearing wear in the Elka linkage.
- ⚠ **IMPORTANT:** Please note that the smallest part of the Elka linkage must face towards the front of the ATV, unlike the stock Honda linkage.