



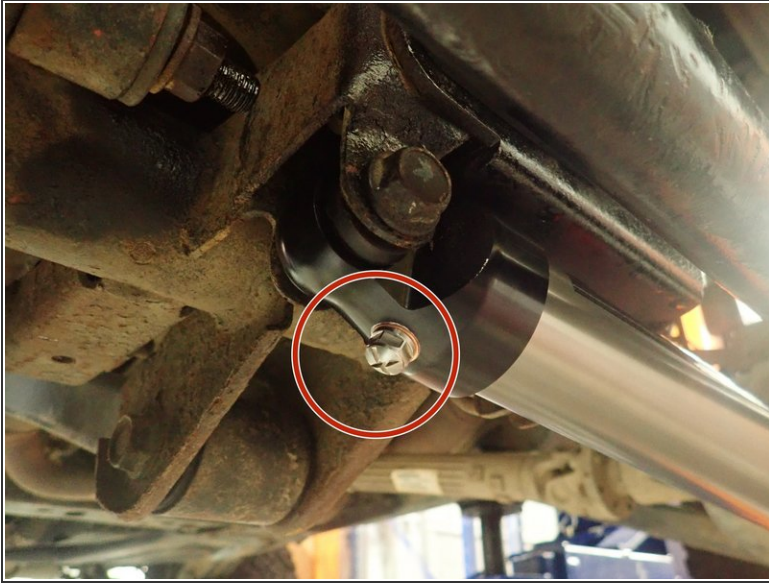
2007-2018 JEEP WRANGLER JK STEERING STABILIZER

FLS-207031-STAB_revA

Written By: Sebastien Blain



Step 1 — OEM REPLACEMENT TYPE INSTALLATION



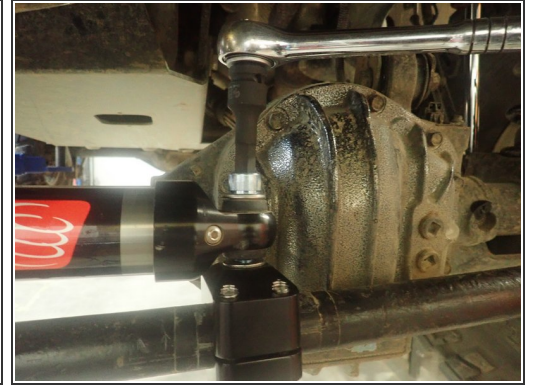
- **For the OEM replacement package:**
- Remove OEM stabilizer and install Elka stabilizer with the head in the bracket close to track bar holding point. Make sure the nitrogen device is facing down as shown by red circle. You will have to compress Elka stabilizer to fit it in place.
- Torque bolts at 60 Ft/Lb

Step 2 — RELOCATED INSTALLATION TYPE

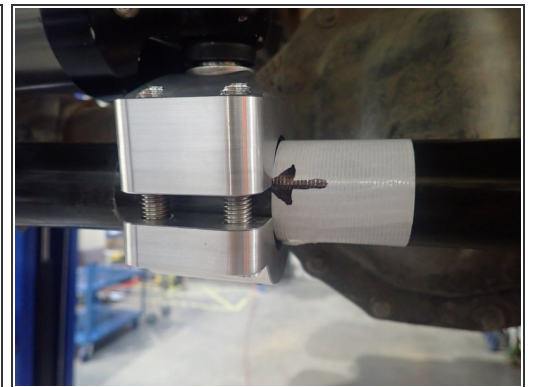
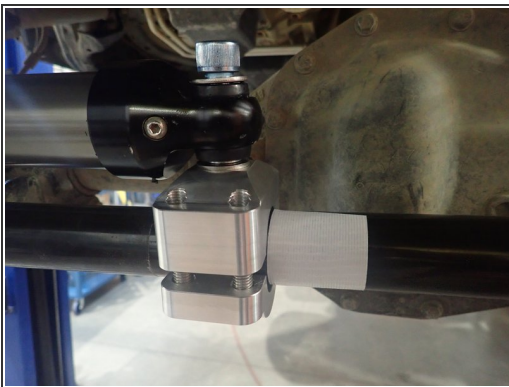
- **RELOCATED TYPE PACKAGE INSTALL:**
- Remove OEM steering stabilizer.
- Remove bolt under track bar bolt, then replace it with Elka supplied shaft as shown.
- Using nylon lock supplied nut, torque shaft to 80 Ft/Lb.

Step 3 — RELOCATED INSTALLATION TYPE (continued)

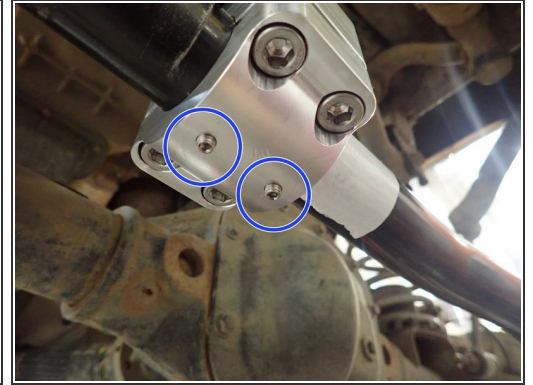
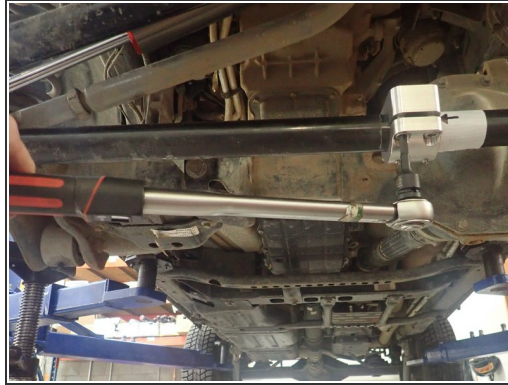
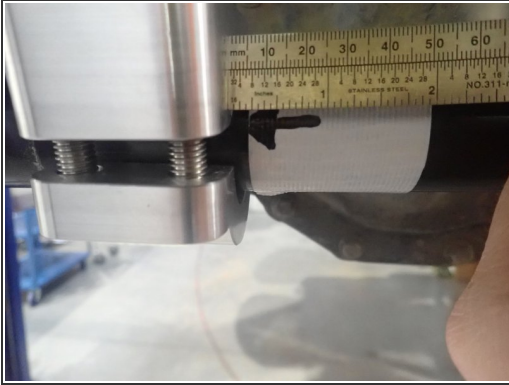
- Slide first supplied washer on Elka shaft, install eyelet side of Elka stabilizer then slide second washer and nut as shown.
- Apply thread locker on shaft threads and torque supplied thin nut at 70 Lb/Ft.

Step 4 — RELOCATED INSTALLATION TYPE (continued)

- Lift the vehicle off the ground, then turn the wheels fully left. Make sure the left wheel steer stopper touch frame as shown by yellow circle
- Install Elka clamp on steering Tie rod (must be 1.5" diameter). Do not tight now.
- With a supplied washer installed on each sides of stabilizer head, fix temporarily stabilizer on clamp as shown.

Step 5 — RELOCATED INSTALLATION TYPE (continued)

- With the wheels turned completely to the left and the stabilizer in fully extended position:
- Stick a band of tape next to the right side of the clamp. Slightly tilt the clamp (10-15 degrees) as shown, then mark a line or an arrow as a point of reference.
- Remove bolt that hold the stabilizer head on clamp for next step.

Step 6 — RELOCATED INSTALLATION TYPE (continued)

- Slide clamp assembly from 1/16" to 1/4", so as to compress stabilizer, then torque clamp's socket head bolts in criss-cross pattern at 60 Ft/Lb.
- Make sure that the clamp still align with the tape mark and is slightly compressed when wheels are fully turned to left.
- Tight set screws under clamp as shown by blue circles.
- With a supplied washer installed on each sides of stabilizer head, fix stabilizer on clamp and torque bolt at 70 Lb/Ft.

Step 7 — FINAL INSPECTION



- Turn wheels fully right and make sure the steer stopper touch the frame.
- Check that the stabilizer still have a small amount of shaft travel when fully steer to the right. Red part must not touch the black eyelet. Adjust clamp position if needed.
- Steer wheels fully left and double confirm you can hit the steer stopper before the stabilizer is in fully extended position.
- Installation completed