



# DODGE - RAM 1500 CLASSIC 2008 and UP

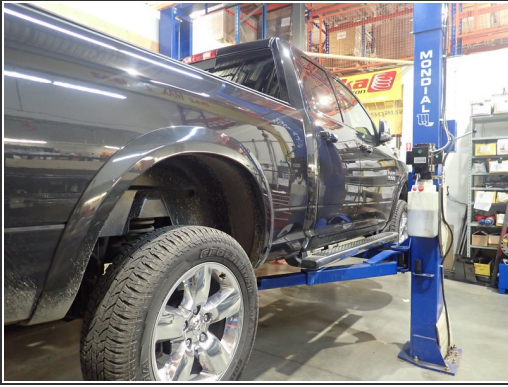
FLS-217013\_revB

Written By: Sebastien Blain





## Step 1 — Installing the new Elka front shocks



- Lift the vehicle off the ground, then remove front tires.
- Unclip the brake line from knuckles, and remove bolt that hold the line on frame on each side to ensure that it will not be damaged and stretched during installation.
- Remove sway-bar link on both sides to allow lowers arms to temporary move separately.

## Step 2 — Installing the front shocks (continued)



- Separate upper control arms from steering knuckles.
- Remove lower shock bolts.
- Unscrew uppers shock nuts.
- Push on lower suspension arm, then remove stock shocks.



### Step 3 — Installing the front shocks (continued)



- **ELKA SHOCKS WITHOUT RESERVOIR:**
- Install new Elka shocks in place with the arrow on top plates facing outside, then torque 3 upper bolts at 35 Ft-Lb, and lower bolt at 80 Ft-Lb.

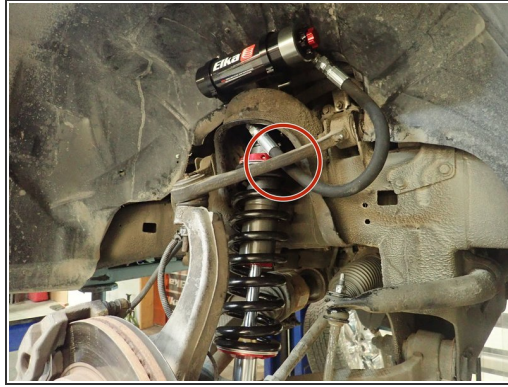
### Step 4



- **ELKA SHOCKS WITH RESERVOIR:**
- For models with remote reservoirs, hoses must face the front of vehicle.
- Fix reservoir's bracket by installing upper top plate bolts as shown.
- Torque 3 upper bolts at 35 Ft-Lb, and lower shock bolt at 80 Ft-Lb.



## Step 5 — Installing the front shocks (continued)



- **REMOTE RESERVOIR SHOCKS MODEL:**
- Sit reservoir into bracket's clamps, then place the reservoir in a way to place hose properly as shown. **BE CAREFUL TO NOT OVERBEND THE HOSE OR MAKE IT RUBBING ON UPPER CONTROL ARM IN THE AREA SHOWED BY RED CIRCLE.** ( Right side shown, 2.5" shock models)
- Reservoir's hose fitting must be closest to frame possible to force hose to go close to plastic fender..
- When reservoir is placed properly, apply threads locker on clamp's bolts and torque them at 10 Ft-Lb.

## Step 6 — Installing the front shocks (continued)



- 2.0" Remote reservoirs shock shown. (Right side shown)

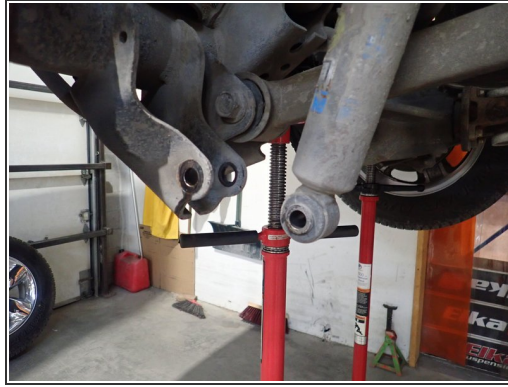
## Step 7 — Installing the new Elka front shocks



- Reassemble knuckles and upper control arms. You may need to jack lower arm to help installing ball joint nut.
- Torque upper control arm nut at 70 Lbs/in.
- Reassemble sway bar link, then torque nut slightly without damaging rubber isolators.
- Fix brake lines in place.
- **ALIGNMENT IS CRITICAL:** A professional alignment must be performed before driving this vehicle at highway speeds. Do not attempt to drive your vehicle after this install without having the alignment readjusted to factory specs.

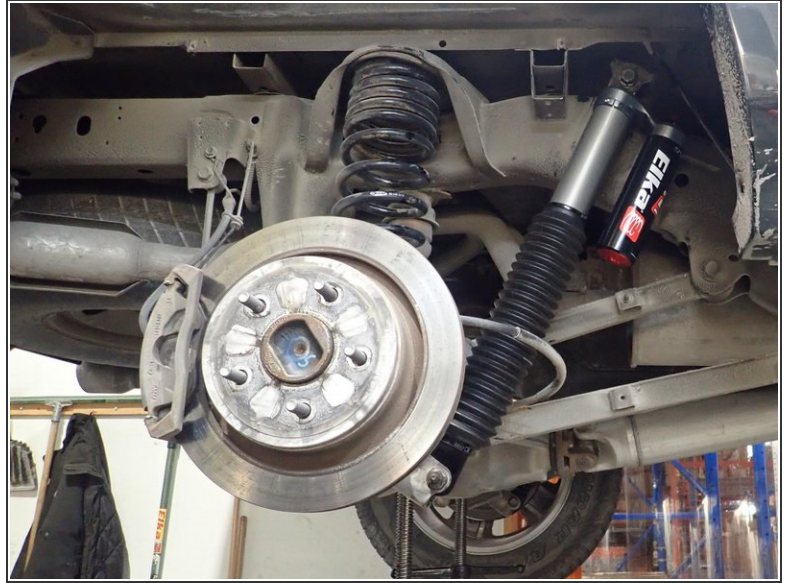


## Step 8 — Installing the new Elka rear shocks



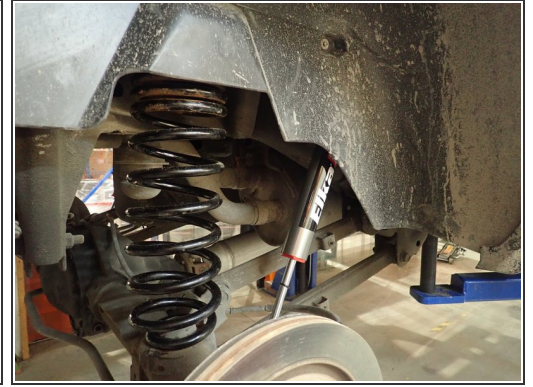
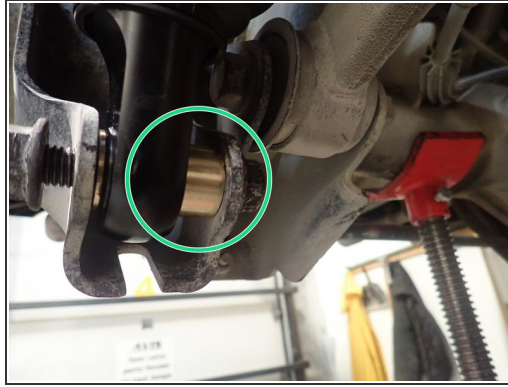
- Using an underhoist stand or a jack, lift slightly rear axle to be able to remove lower bolt.
- Remove plastic fender.
- Remove upper shock's bolts then remove stock shocks. Short 22mm (7/8") wrench should be used to hold upper shock's nut behind the frame.

## Step 9 — Installing the rear shocks (continued)



- **ELKA SHOCKS WITHOUT RESERVOIR:**
  - Install rear shocks with head up as shown. (Right side shown)
- **ELKA SHOCKS WITH RESERVOIR:**
  - Install rear piggyback shocks with reservoirs facing front of vehicle as shown. (Right side shown).

## Step 10 — Installing the new Elka rear shocks



- **\* IMPORTANT NOTES\*:** 2.5" Rear shock models must have offset spacers to avoid frame interference. Larger spacers must be on frame side for head AND eyelet. Larger spacers are shown by green circles on pictures. (Right side shown). Lower eyelet can be turned to align larger spacer.
- Install upper bolts, then adjust rear axle height with underhoist, then install lower bolts.
- Torque all bolts at 80 Lbs/in.
- **ALIGNMENT IS CRITICAL:** A professional alignment must be performed before driving this vehicle at highway speeds. Do not attempt to drive your vehicle after this install without having the alignment readjusted to factory specs.