



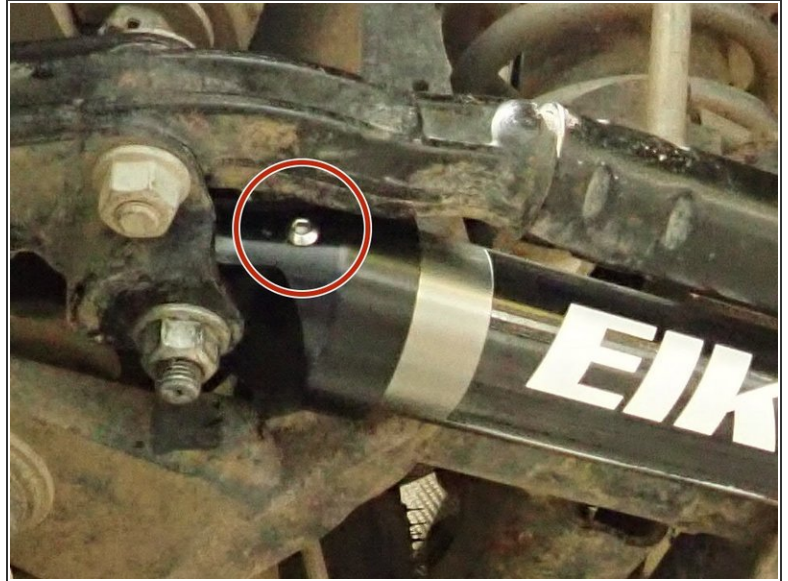
2018-2020 JEEP WRANGLER JL / GLADIATOR JT STEERING STABILIZER

FLS-207037-STAB_revF

Written By: Sebastien Blain

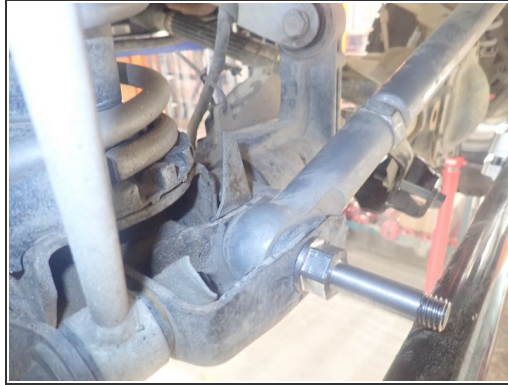


Step 1 — OEM REPLACEMENT TYPE INSTALLATION



- **For the OEM replacement package:**
- Remove OEM stabilizer and install Elka stabilizer with the head facing the wheel as shown. You will have to compress Elka stabilizer to fit it in place.
- Be sure it's the small button head Hex screw that is facing the front of vehicle as shown by red circle.
- Torque bolts at 60 Ft/Lb

Step 2 — RELOCATED INSTALLATION TYPE



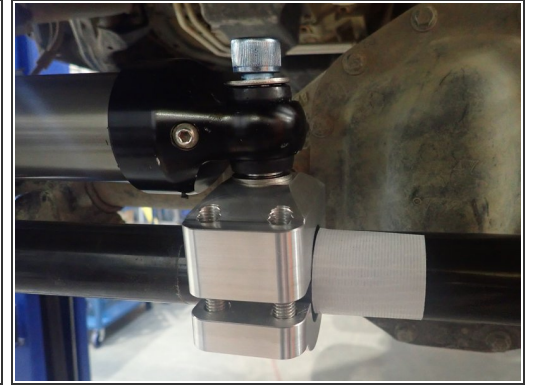
- **RELOCATED TYPE PACKAGE INSTALL:**

- Remove OEM steering stabilizer.
- **DO NOT LIFT THE VEHICLE FOR THIS STEP.** With the vehicle on the ground, remove track bar bolt near to passenger side's sway-bar link as shown.
- Replace the oem bolt with Elka supplied shaft. Re-use OEM nut and torque shaft to 80 Ft/Lb.

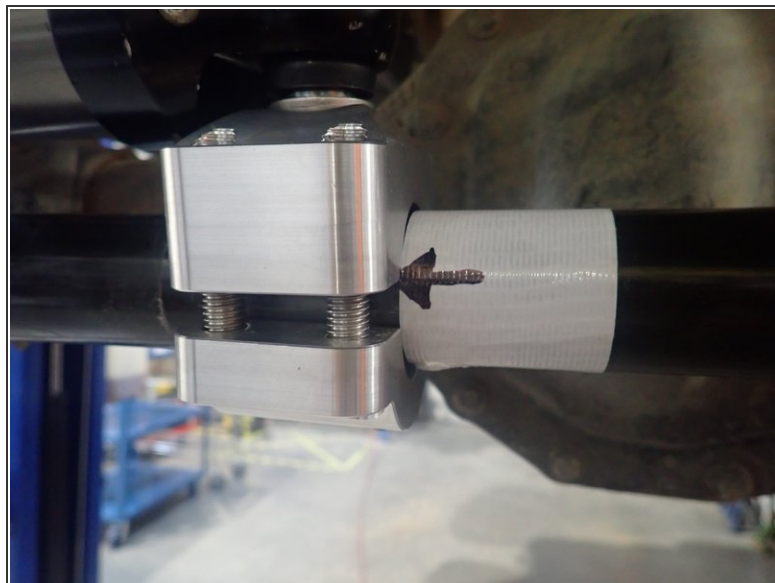
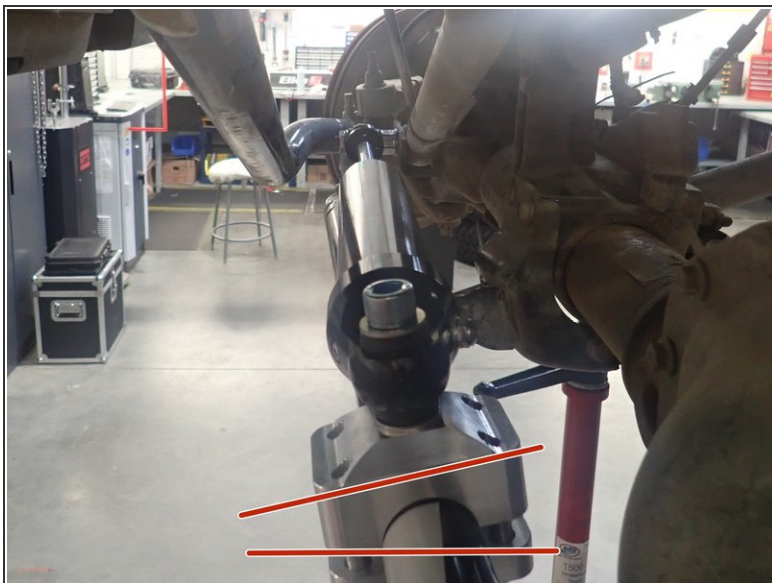
Step 3 — RELOCATED INSTALLATIONTYPE (continued)



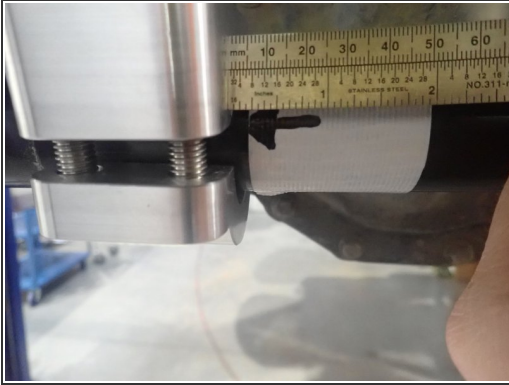
- Slide first supplied washer on Elka shaft, install eyelet side of Elka stabilizer then slide second washer and nut as shown.
- Apply thread locker on shaft threads and torque supplied nut at 70 Lb/Ft.

Step 4 — RELOCATED INSTALLATIONTYPE (continued)

- Lift the vehicle off the ground, then turn the wheels fully left. Make sure the left wheel steer stopper touch frame as shown by yellow circle.
- Install Elka clamp on steering Tie rod (must be 1.5" as oem). Do not tight now.
- With a supplied washer installed on each sides of stabilizer head, fix temporarily stabilizer on clamp as shown.

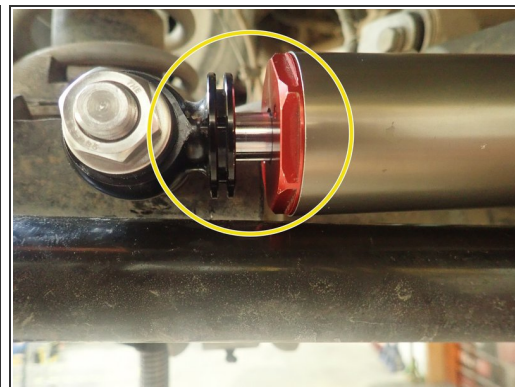
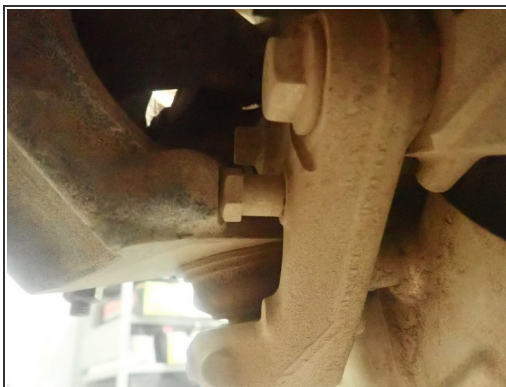
Step 5 — RELOCATED INSTALLATIONTYPE (continued)

- - With the wheels turned completely to the left and the stabilizer in fully extended position:
- Stick a band of tape next to the right side of the clamp. Slightly tilt the clamp (10-15 degrees) as shown, then mark a line or an arrow as a point of reference.
- Remove bolt that hold the stabilizer head on clamp for next step.

Step 6 — RELOCATED INSTALLATIONTYPE (continued)

- Slide clamp assembly from 1/16" to 1/4", so as to compress stabilizer, then torque clamp's socket head bolts in criss-cross pattern at 60 Ft/Lb.
- Make sure that the clamp still align with the tape mark and is slightly compressed when wheels are fully turned to left.
- Tight set screws under clamp as shown by blue circles.
- With a supplied washer installed on each sides of stabilizer head, fix stabilizer on clamp and torque bolt at 70 Lb/Ft.

Step 7 — FINAL INSPECTION



- Turn wheels fully right and make sure the steer stopper touch the frame.
- Check that the stabilizer still have a small amount of shaft travel when fully steer to the right. Red part must not touch the black eyelet.
- Steer wheels fully left and double confirm you can hit the steer stopper before the stabilizer is in fully extended position.
- Installation completed