



NISSAN FRONTIER 4x4 2005-2020

FLS-217005_revC

Written By: Sebastien Blain

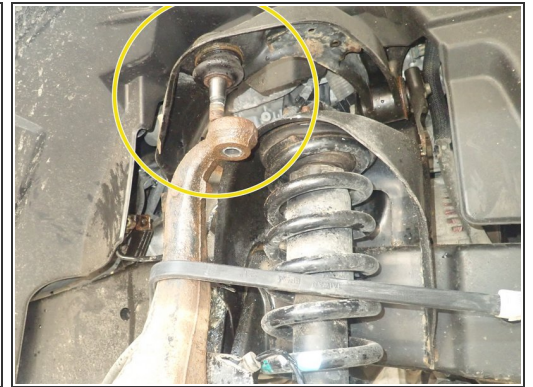
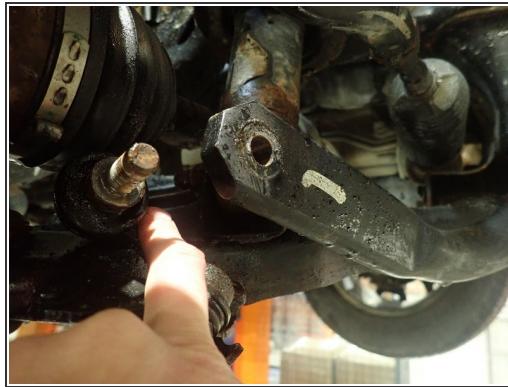
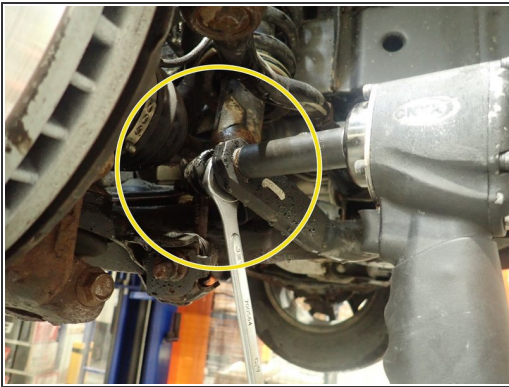


Step 1 — Removing the stock shocks



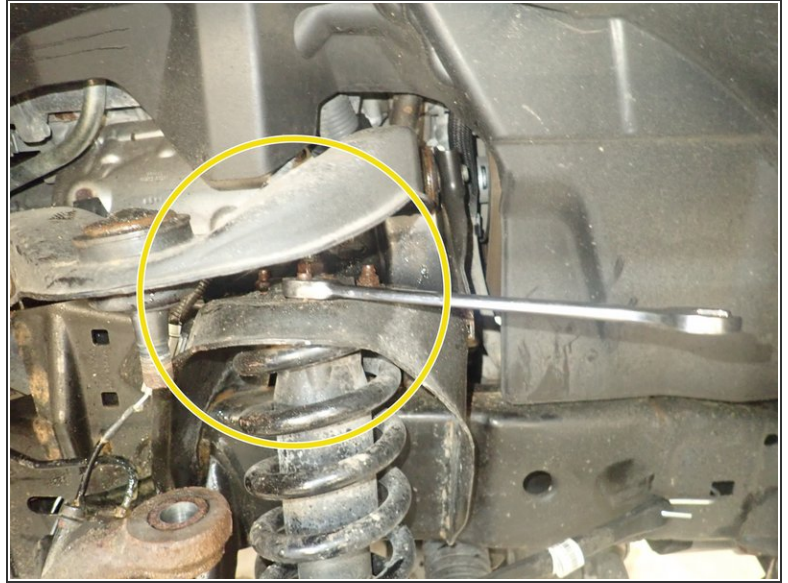
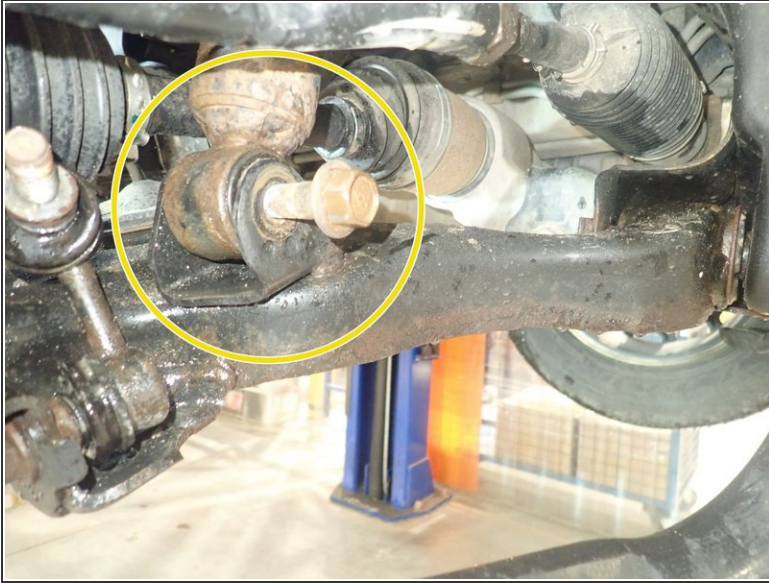
- Lift the vehicle off the ground, then remove front tires.
- Remove the bolts that hold the brake lines, and unhook them on each side to make sure you don't damage them during installation.

Step 2 — Removing the stock shocks



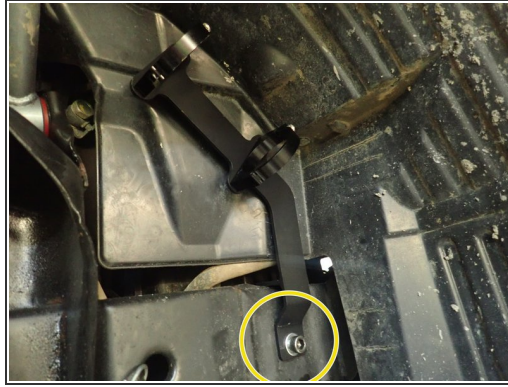
- Remove sway-bar link on both sides to allow lowers arms to temporary move separately.
- Separate upper control arms from steering knuckles.

Step 3 — Removing the stock shocks



- Remove lower bolts from OEM shocks. Keep OEM bolts to install Elka shocks.
- Remove the 3 upper nuts from OEM shocks.
- Remove front shocks.

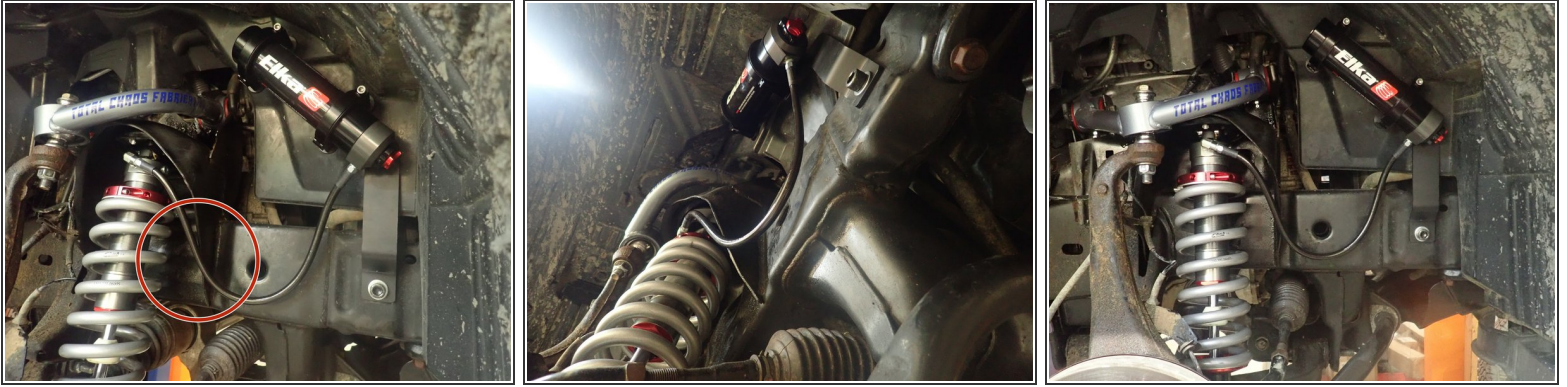
Step 4 — Installing the new Elka front shocks



- **ELKA SHOCKS WITH RESERVOIR:**

- Use the bolt and the small washer provided, and pass it into the reservoir bracket as shown.
- Install bracket using the square hole on truck's frame (right side shown).
- Fix bracket using big washer and nut provided. Use thread locker and torque bracket at 40 Ft-Lb.

Step 5 — Installing the front shocks (continued)



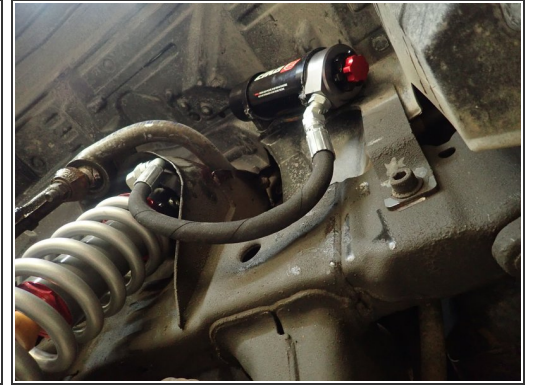
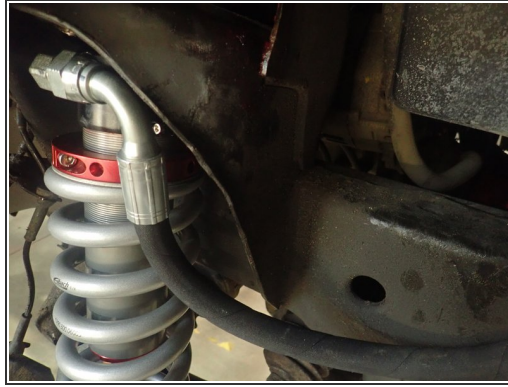
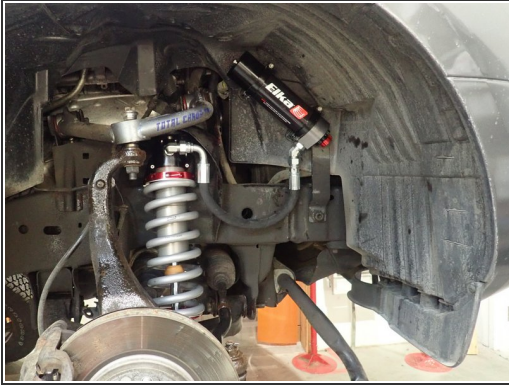
- Install Elka shocks using OEM lower bolts and provided upper bolts. Hoses must face front of vehicle as shown (right side shown).
- Use threads locker on all bolts. Torque 3 upper bolts at 35 Ft-Lb, and lower bolt at 80 Ft-Lb.
- Sit reservoir into bracket's clamps, then place the reservoir in a way to place hose properly and closest to the frame possible. **BE CAREFUL TO NOT OVERBEND THE HOSE OR MAKE IT RUBBING ON UPPER SHOCK MOUNT IN THE AREA SHOWED BY RED CIRCLE.**
- When reservoir is placed properly, apply threads locker on clamp's bolts and torque them at 10 Ft-Lb.

Step 6 — Installing the front shocks (continued)



- Left side installation shown.
- **ELKA SHOCKS WITHOUT RESERVOIR:** Follow same installation steps without bracket install.
- Re-install in order; Upper control arm, swaybar links, brake lines and wheels. Torque all bolts at manufacturer's specs.
- **ALIGNMENT IS CRITICAL:** A professional alignment must be performed before driving this vehicle at highway speeds. Do not attempt to drive your vehicle after this install without having the alignment readjusted to factory specs.

Step 7 — Installing the front shocks (2.5" Models)



- Same installation steps for 2.5" shocks serie . (Right side shown)
- **ALIGNMENT IS CRITICAL:** A professional alignment must be performed before driving this vehicle at highway speeds. Do not attempt to drive your vehicle after this install without having the alignment readjusted to factory specs.

Step 8 — Installing the rear shocks (continued)



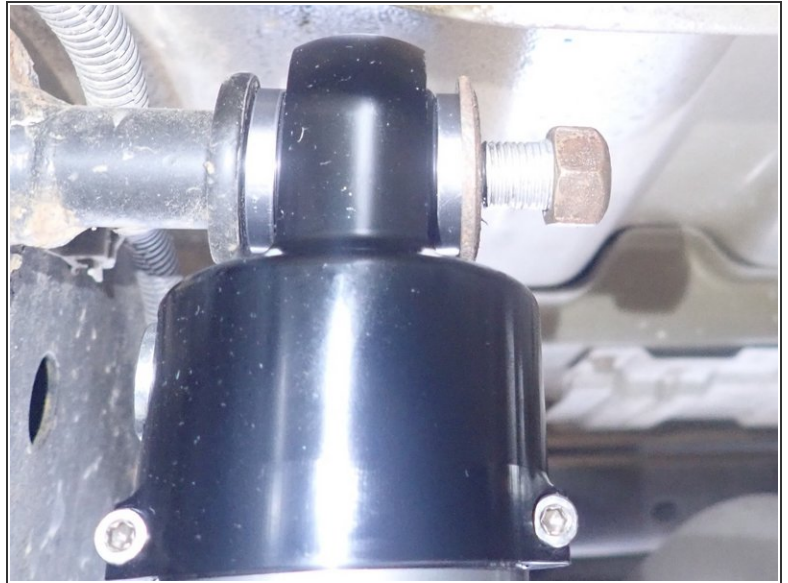
- Using an underhoist stand or a jack, support rear axle to remove tension on bolts .
- Unhook brake lines to make sure you don't damage them during installation.
- Remove lower shock bolts, upper oem nuts, washers and shocks. Keep all oem hardware to re-install Elka shocks.

Step 9 — Installing the rear shocks (continued)



- **ELKA SHOCKS WITHOUT RESERVOIR:**
- Remove rust on upper stud and clean it carefully. Anti-seize or grease can be applied on stud.
- Install o-rings on provided upper mount spacers, then slide first spacer/o-ring on truck upper stud as shown by blue circle.
- Apply bearing grease on upper spherical shock's bearing.

Step 10 — Installing the rear shocks (continued)



- Slide shock's upper end on upper stud, then slide second spacer/o-ring assembly. O-ring must face spherical bearing.
- Using oem washer and nut, apply threads locker then torque upper nut at 50 Ft-Lb.
- Adjust axle height with underhoist, then use oem lower bolt to fix shock's lower mount. Apply thread locker then torque lower bolts at 80 Ft-Lb.

Step 11 — Installing the rear shocks (continued)



- **ELKA SHOCKS WITH RESERVOIR:**

- Remove rust on upper stud and clean it carefully. Anti-seize or grease can be applied on stud.
- Slide shock's upper mount on stud. Using oem washer and nut, torque upper mount at 40 Ft-Lb.
- Reservoirs must face front of truck, and hoses must face into vehicle. Left and right shocks hose configuration are different.
- Rear Right shock is shown by the yellow circle, and Left one is shown by green circle.
- Adjust axle height with underhoist, then use oem lower bolt to fix shock's lower mount. Apply thread locker then torque lower bolts at 80 Ft-Lb.

Step 12 — Installing the rear shocks (2.5" serie)



- Same installation steps for 2.5" shocks.