



JEEP WRANGLER JK 2007-2018

FLS-207031_revB

Written By: Sebastien Blain

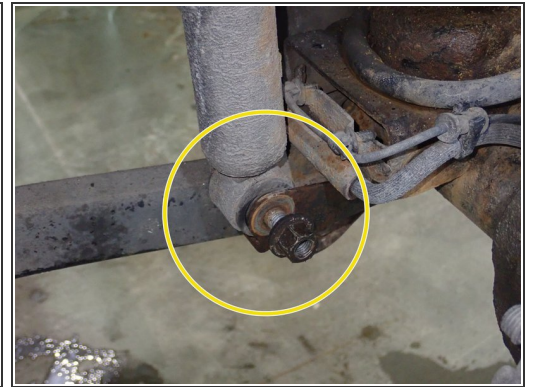


Step 1 — Installing the new Elka front shocks



- Lift the vehicle off the ground, then remove front tires.
- Remove the bolts (on frame and on lower arm) that holds the brake line on each side to ensure that it will not be damaged and stretched during installation

Step 2 — Installing the front shocks (continued)



- Supporting the lower front axle is recommended to remove tension on the shock absorber attachment points.
- Remove sway-bar link on both sides to allow front axle to drop down much as it can.
- Remove lower shock bolts.

Step 3 — Installing the front shocks (continued)



- **ON THE RIGHT SIDE ONLY:** To install the Elka shock, the plastic part above the shock upper mount must be modified to give more room for installation.
- A cut at least 3/4 in high is required. See the suggested cutout on the picture with red circle.
- Remove the upper mount nuts on both sides, then remove OEM shocks.

Step 4 — Installing the front shocks (continued)



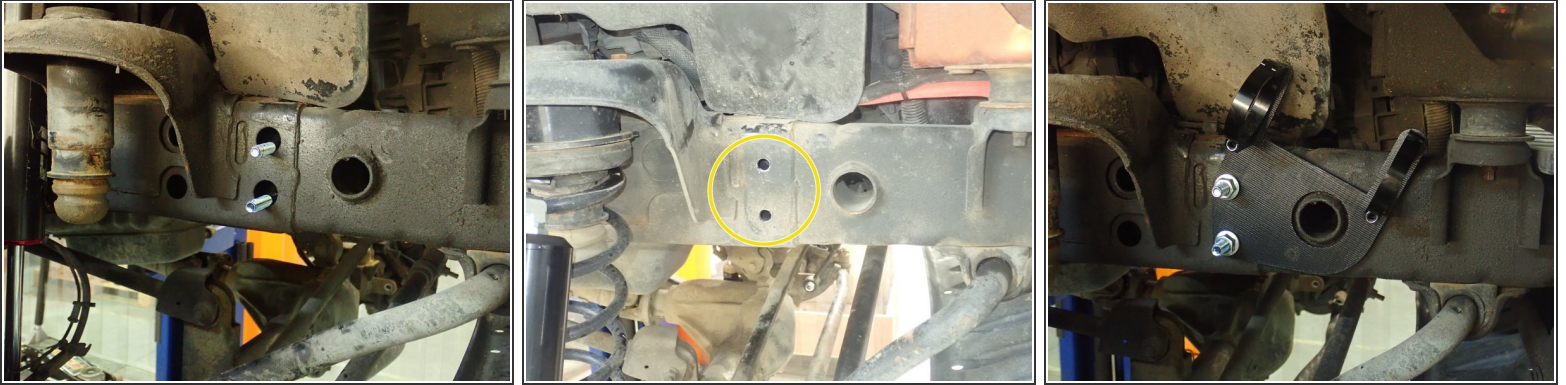
- Place the upper rubber bushing and the upper steel washer on top of shock mount, aligned with stud hole as shown.
- With the lower mount bolt in hand, completely compress the shock and introduce it in its place by placing the lower bolt in place. While the shock take back its full length, align the upper stud in the hole of the shock tower.
- Torque upper nut at 60 Lbs-Ft , and lower bolt at 90 Lbs-Ft

Step 5 — Installing the front shocks (continued)



- **SHOCKS WITHOUT RESERVOIR AND 2.0" SERIES:**
- No bracket necessary for these type of shock. 2.0" series with reservoir attached on shock's body must be installed with reservoir toward spring side as shown.

Step 6 — Installing the front shocks (continued)



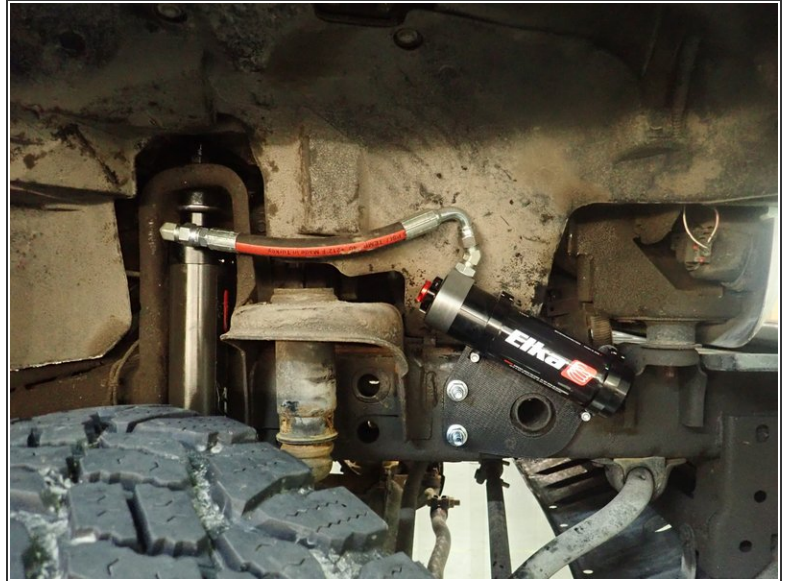
- **2.5" SHOCK SERIES WITH RESERVOIR:**
- **RIGHT SIDE:** Use the bolts provided on the right side bracket kit. Install a washer first, then pass them through frame holes as shown.
- Some models/years don't already have these holes. Use the bracket as guide and drill 13mm (1/2") holes through frame to fix bracket as shown by yellow circle.
- Install right side bracket kit as shown, then torque bolts at 30 Lbs-Ft. Using threads locker is recommended.

Step 7 — Installing the front shocks (continued)



- **LEFT SIDE:** Unscrew the 2 bolts shown with yellow circles.
- Slide 1 provided washer on each bolt, then pass bolts through bracket. Place 2 other washers on bolts behind bracket to space it as shown.
- Torque bolts at 50 Lbs-Ft.

Step 8 — Installing the front shocks (continued)



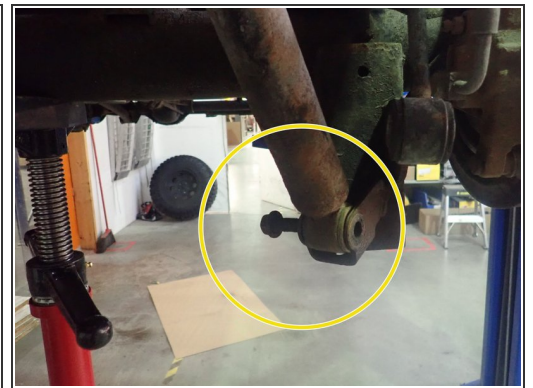
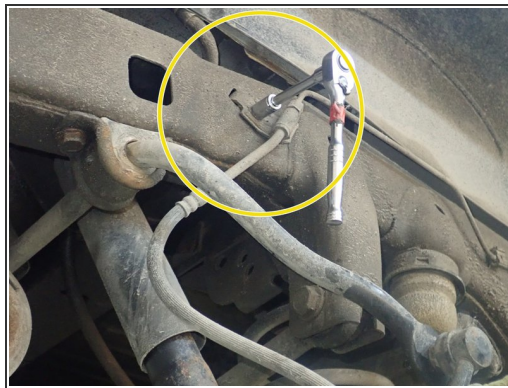
- Sit reservoirs into bracket's clamps, then place the reservoir in a way to place hose properly as shown. (Right side shown)
- When reservoir is placed properly, apply threads locker on clamp's bolts and torque them at 10 ft.lb.
- Re-install sway-bar links, brake lines and wheels, then torque all bolts as manufacturer's specs.
- **ALIGNMENT IS CRITICAL:** A professional alignment must be performed before driving this vehicle at highway speeds. Do not attempt to drive your vehicle after this install without having the alignment readjusted to factory specs.

Step 9 — Rear shocks WARNING



- ⚠ If you are installing larger diameter rear shocks than factory, aftermarket relocating brackets will cause interference and **DAMAGE** to the shocks and to the bracket
- ⚠ You must absolutely install an aftermarket **Adjustable Track Bar** if you order larger shocks than factory

Step 10 — Installing the new Elka rear shocks



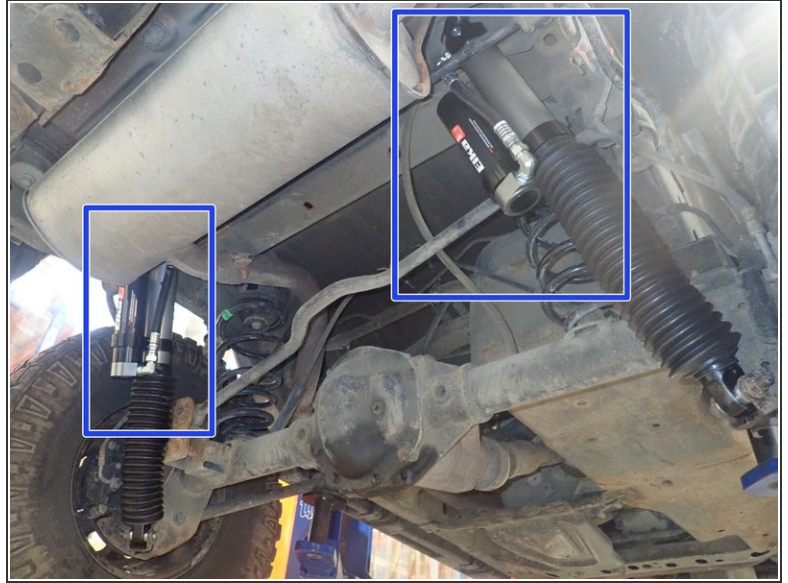
- Supporting the lower rear axle is recommended to remove tension on the shock absorber attachment points.
- Remove the bolts that holds the brake line on each side to ensure that it will not be damaged and stretched during installation
- Remove lower shock bolts.
- Remove upper shock bolts, then remove OEM shocks.

Step 11 — Installing the rear shocks (continued)



- Install upper bolts on Elka shocks first, then compress shocks to be able to put the lower bolts in place.
- Note: Due to limited space for upper mount, we recommend using a ratchet 3/8" with a short socket and an extension.
- Shocks without reservoir are the same on left or right side. For shocks with reservoirs, see next steps for reservoir position.

Step 12 — Installing the rear shocks (continued)



- **SHOCKS WITH RESERVOIRS:**

- Left and right shocks have different hose configuration: Left side must be installed with reservoir toward the rear of vehicle and slightly facing outside. Right side must be installed with the reservoir slightly facing the rear of vehicle and toward the inside of vehicle.
- Picture with red rectangles showing 2.0" shocks set-up and picture with blue rectangles showing 2.5" shocks set-up.
- Torque all shocks bolts at manufacturer's specs, then re-install brake lines.