



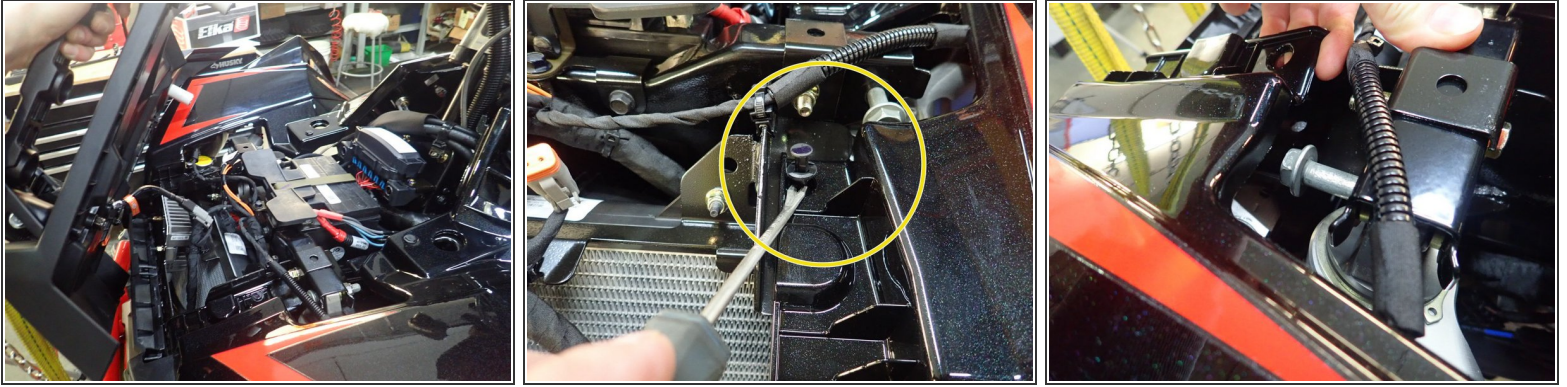
# Polaris Scrambler XP 1000S 2020

FLS-201011\_revA

Written By: Sebastien Blain



## Step 1 — Removing the stock shocks



- Lift the vehicle using a jack or stand so that the wheels are off the ground.
- Remove front rack and plastic rivet close to upper left shock mounting as shown by yellow circle.
- Lift slightly front fender to remove upper shock bolt.
  - Remove all others shocks bolts and keep them to install your new Elka shocks.



## Step 2 — Installing the new Elka front shocks



- Install the front new Elka shocks with the reservoir ( on Stage 3-4-5 ) **at the top of vehicle.** and facing the rear of vehicle ( Left side shown ).
- On Stage 1 and Stage 2, the left and the right shock are the same. Just install them **with the shraeder nitrogen valve at the top of vehicle, and the valve facing outside.**
- On Stage 2, Stage 4 and Stage 5 models, the lower shock eyelets should be installed with the rebound adjuster oriented **towards the rear of the vehicle** as shown by the blue Arrow on the photo ( Right side shown ). If needed, you can turn the lower eyelet to orient properly.

### Step 3 — Installing the new Elka rear shocks



- Install both new Elka rear shocks with the piggyback **reservoir at the top** and oriented **towards the rear of the vehicle** as indicated by the red Arrow on the photo. ( Left side shown ).
- On Stage 1 and Stage 2, the left and the right shock are the same. Just install them **with the shraeder nitrogen valve at the top of vehicle, and the valve facing outside.**
- On Stage 2, Stage 4 and Stage 5 models, the lower shock eyelets should be installed with the rebound adjuster oriented **towards the rear of the vehicle** as shown by the blue Arrow on the photo ( Right side shown ). If needed, you can turn the lower eyelet to orient properly.