



# Can-Am Ryker STD ACE /900 SPORT ACE/ RALLY EDITION ACE 2019-up

P-LK-94044

Written By: Jean-Philippe Dextraze



## INTRODUCTION

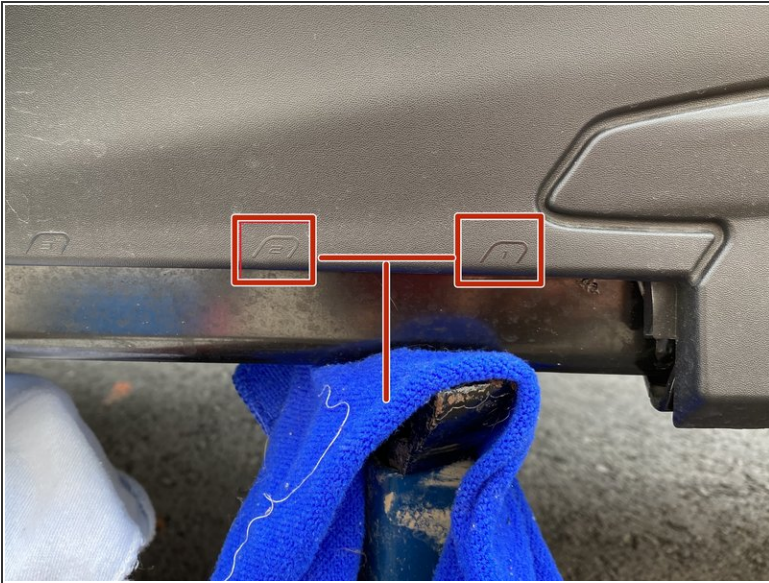
Elka suspension strongly recommends to install the shock absorber by your local dealer (specially for the rear shock).

No Rear bracket provided for Rally Edition. Reuse the OEM bracket.

Bracket Provided for standard edition



## Step 1 — Jacking up Vehicle



- Jack up each side of the vehicle on the bottom frame rails (use a rag to prevent scratches)
- Place jack stands between position 1 and 2 of pedals. This will balance the vehicle with the rear wheel in the air

## Step 2 — Rear Shock Removal



- Remove the top shock bolt using a 16mm socket
- Keep your original bolts to re-use when installing your new Elka shocks.

### Step 3 — Rear Shock Removal (continued)



- Place cardboard under the vehicle to prevent scratching the muffler assemble
- Remove the gold bolt holding up the muffler assembly
- *Be careful as the muffler assembly will drop once the bolt is loose. You can place your foot to hold it up and slowly lower it to the cardboard*
- *You do not need to remove the muffler assembly from the front. You can let it hang like in photo #2*



## Step 4 — Rear Shock Removal (continued)



- Remove the lower linkage bolt using an impact or ratchet.
- Use a 19mm wrench to hold the nut on the other side while loosening

## Step 5 — Rear Shock Removal (continued)



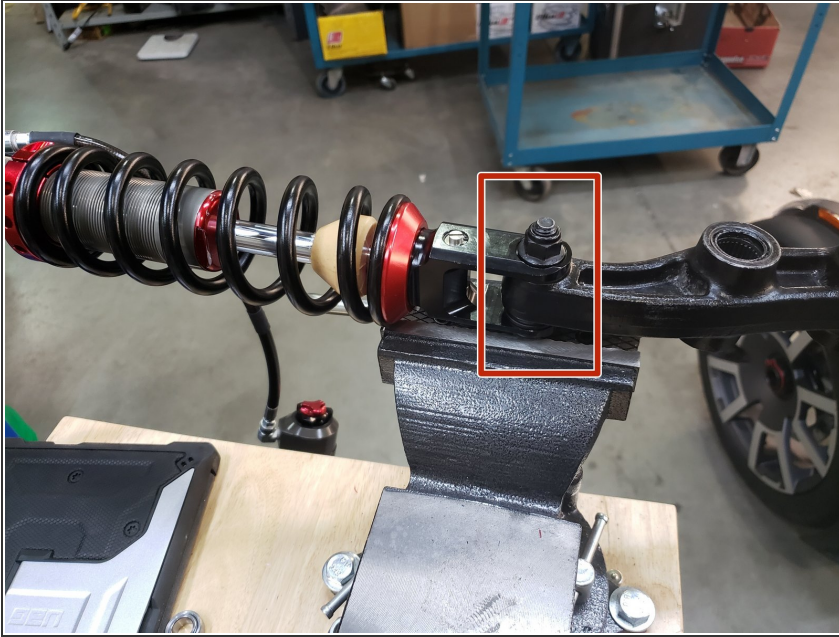
- Use an impact or long breaker bar to remove the top linkage bolt (gold). This bolt is very tight

## Step 6 — Rear Shock Removal (continued)



- With the shock loose, slowly wiggle the shock while bending the linkage at an approx 90deg angle from the shock (see photo #2).
- Pull out the shock from the top as seen in the photo. This step might seem impossible, but keep working at it, it will work.
- *You might need to jack the vehicle higher, or lower the rear wheel to get the shock out. It will come out*

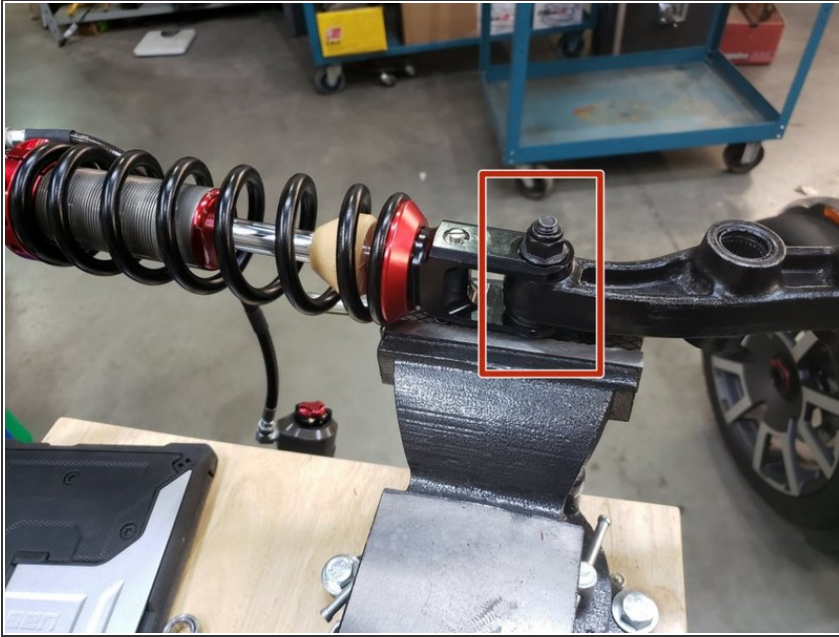
## Step 7 — Rear Shock Removal (continued)



- Remove Rear shock absorber with pivot arm and link arm from the vehicle.
- Detach the shock absorber from the pivot arm (red square on the picture) and link arm
- You can use a vise or use 2 ratchets on each side of the fork to remove the shock
- **Be very careful not to get any dirt inside the other holes of the linkage. It can damage the needle bearings.**
- *The lower linkage hole has a steel sleeve inside. You can secure the sleeve using a zip tie to make sure it doesn't fall out*



## Step 8 — Rear Shock Installation



- Install Elka Shock into bracket (refer to photo for orientation)
- Torque the shock bolt to 20-26 ft.lbs

## Step 9 — Rear Shock Installation (continued)



- Reinstall the rear shock through the same hole you removed it from. If you have a hose, the fitting should be facing upwards
- The rebound knob should be facing inwards as seen in the photo #2
- *If you have a Max Mount, you will need to remove it to get the shock back in*

This document was generated on 2024-04-26 09:19:14 PM (MST).

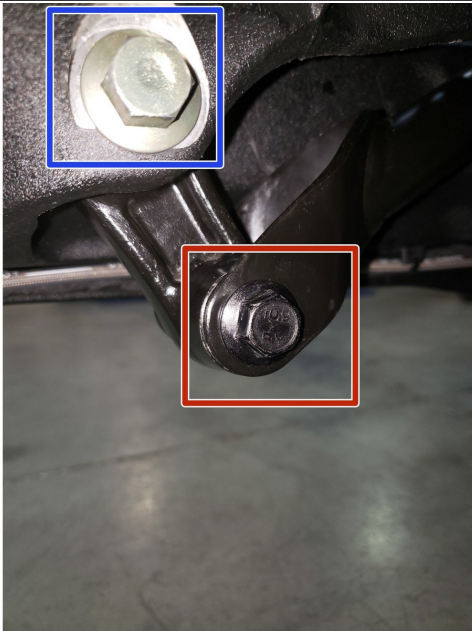


## Step 10 — Rear Shock Installation (continued)



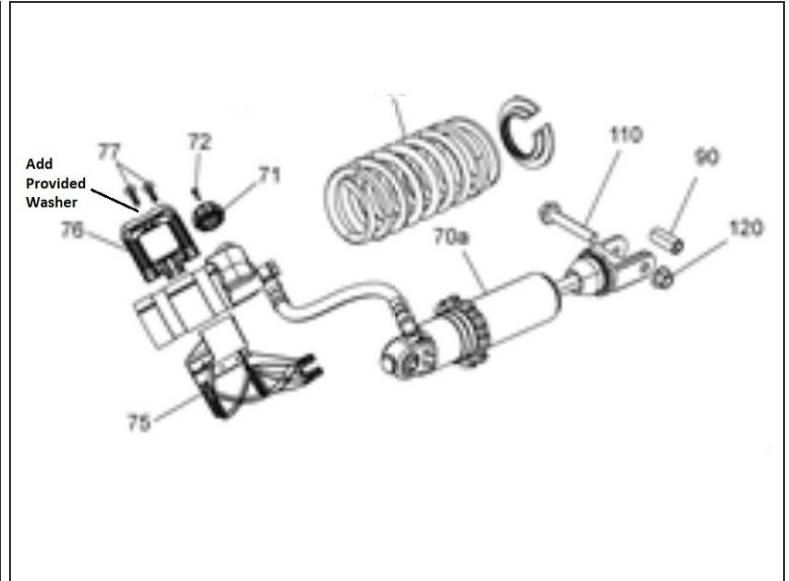
- Torque the top shock bolt to 20-26 ft.lbs

## Step 11 — Rear Shock Installation (continued)



- Torque the brass bolt to 15 ft-lbs
- Torque the bottom bolt to 77 ft-lbs

## Step 12 — Rear Shock Installation (continued)



- Install the reservoir in the OEM mounting bracket (provided for standard edition). **Put the provided rubber washer between the screw and the bracket** (see blue circle). Make sure to not overtorque the screw.
- The reservoir must be installed with the hose fitting facing the rear of vehicle, so the hose going to left side. See the orientation shown by the red square
- *The bracket will not need to fully close around the reservoir. Only tighten enough to snugly hold the reservoir*

## Step 13 — Front Shock Installation



- Jack up one side at a time
- Remove front shock top and bottom bolt using 2x 15mm wrenches for the top and a 15mm ratchet and 15mm wrench on the bottom
- Remove the original shock
- Install the front new Elka shocks with the reservoir ( on Stage 3-4-5 ) or Schraeder nitrogen valve ( on Stage 1-2 ) at the top of vehicle. ( Left side shown ).



## Step 14 — Front Shock Installation ( continued )



- On Stage 2, Stage 4 and Stage 5 models, the lower shock eyelets should be installed with the rebound adjuster oriented towards the back of the vehicle as shown by the Red square on the photo ( Left side shown ). If needed, you can turn the lower eyelet to orient properly.